



Roller Door UK 55XL & 77mm Fitting Instructions

Recommended 2 person installation.
All fitting and measuring instructions are given
from inside the garage looking out.

General Instructions

Before you begin installation, complete the following instructions and familiarise yourself with all parts and tools:

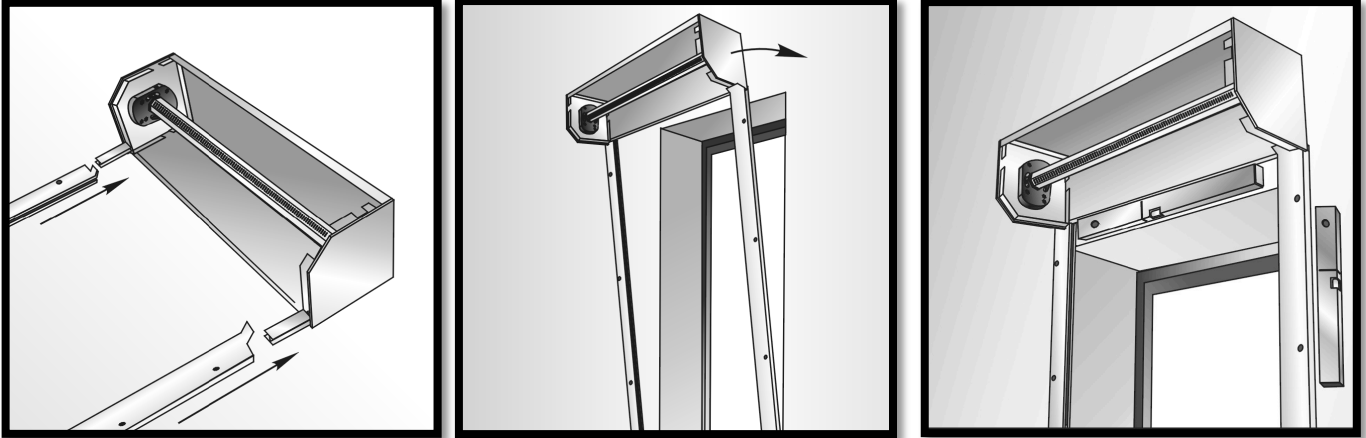
- ✓ Check that the parts you have been sent are correct to the parts list below and the specification ordered.
- ✓ Visually inspect the condition of all parts to ensure no damage has taken place whilst in transit.
- ✓ Guide runners will be marked with a left (L) and right (R) sticker, please make sure you clearly find and have the guide runners the correct way before you drill any holes or install.
- ✓ Guide runners have been pre drilled and screws and plugs provided. Please follow the step by step instructions to installing your UK55 electric roller garage door.
- ✓ Remove all packaging and keep to one side until door installation is complete. Remove front box cover, by removing 2 retaining screws at either end of the front box cover. (Please retain these screws, as they are required for the final part of installation)

Parts Supplied
Door Box inc End Plates
Door Curtain
Motor within Barrel
Guide Runners
Control Panel inc 2 x Remotes
10 x Cover Caps
Limit Tool
Crank Handle
Crank Handle Clip
Locking Straps attached to curtain
Screws for locking straps – 2 per strap

Tools Required
Hammer
Tape Measure
Screwdrivers
Cordless Drill
Brick Drill
7mm Masonry Bit
8mm High Speed Steel Bit
12mm High Speed Steel Bit
Stanley Knife
Spirit Level
Step Ladders
Personal Protection Equipment
Pliers/Side Cutters
Electrical Screwdrivers

Instructions for installing your RDUK55XL & RDUK77

- 1.** Insert the guides into the door box taking care not to damage the guide runners; raise the box and guide runners up and against the opening. Making sure that all the door box and guide runners are plumb/level.
- 2.** Drill holes (7mm) into brick work through the pre drilled holes and fix with plugs and screws (if fixing into woodwork, brown plugs will not be required) complete process until all pre drilled holes are fixed into place.



Pictures for illustration purpose only.

- 3.** Drill 8mm fixing holes through each top corner of the end plate/back box or through each side of the end plate if installing in between the opening. Next drill holes (7mm) into brick work through the holes just drilled and fix with plugs and screws (if fixing into woodwork, brown plugs will not be required) this will help support the box assembly.



Pictures for illustration purpose only.

- 4.** Control board installation: Install the control board approximately 300mm on the motor side from the guide runner edge and door, also make sure it is at a comfortable height to operate.

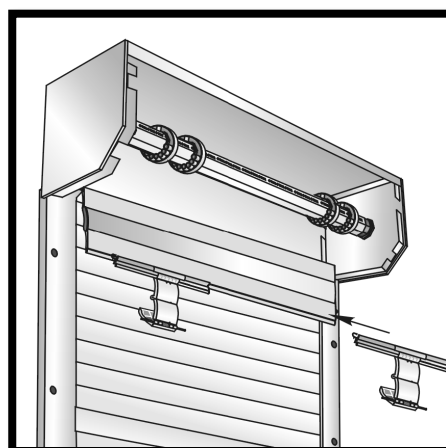
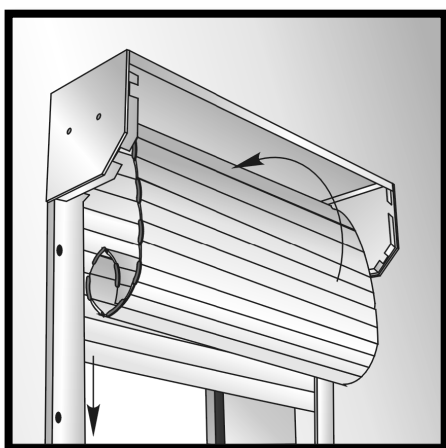
See wiring diagrams below and instructional diagram which is enclosed in your control panel box (for Somfy please refer to the instruction in the box).

Do not switch the power on to the unit until the wiring is complete!

PLEASE READ THE WIRING INSTRUCTIONS FOR YOUR CONTROL PANEL, WHICH IS IN THE CONTROL PANEL BOX BEFORE WIRING THIS ITEM. IF YOU HAVE ANY QUESTIONS PLEASE CALL 01652 638149 BEFORE WORK IS UNDERTAKEN.

Operation of the door requires a one push of the open button, but on closing of the door requires the down button to be continuously pressed until fully closed. (Dead man closing safety feature)

- Turn power on.
 - Press the down button on the transmitter and the barrel should rotate towards the opening and stop on its own (if the barrel rotates away from the opening press the stop button on the transmitter, switch off the power and switch the “brown” & “black wires” on the motor terminals in the control panel). Refer to section 4 for the wiring diagram. Once the wiring has been changed, repeat step 1 & 2.
 - Simulate the barrel in the closed position before attaching the curtain.
5. Carefully feed the curtain over the barrel and down the guides making sure that the rubber seal is at the bottom and the concave surface of the door is facing internally. Slide on the drive down straps on the curtain as shown. (you could use some off cut carpet or fabric on the barrel to prevent any damage during installation).



6. Mount the curtain onto the barrel, each strap will connect to the barrel with the green turning lock. You will also have been provided screws which require 2 per strap. Screw the strap to the barrel.

7. Now continue with the limit set up:

Press the up button on the transmitter and the barrel should rotate, lifting the door curtain upwards. Press the stop button if the door approaches 300mm of the open position. Set the open position of the door so there is an approximately distance of 80mm from the top of the guide to the lower edge of the door by using the images below.

Setting the Top Limit

Using either a test lead or the PROG (up) and DEL (down) hold - to - run buttons inside the control panel.

- Run the motor in the down direction until it stops. At this point attach the curtain via the straps provided unless already attached.
- Run the motor up to the top leaving only the bottom piece of the door within the tracks.

If the door doesn't sit in the desired position within the opening and follow the steps below.

To make the door sit higher in the guides.

+ the limit approx 5 times, then take the door down & back up again to check if it has moved, repeat until you get the curtain at the desired level.

To make the door sit lower in the guides.

- the limit approx 5 times, then take the door down & back up again to check if it has moved, repeat until you get the curtain at the desired level.

Left Hand Motor



WHITE is your DOWN limit
RED is your UP limit

Right Hand Motor



RED is your DOWN limit
White is your UP limit

Setting the Bottom Limit

Using either a test lead or the PROG (up) and DEL (down) hold - to - run buttons inside the control panel.

- Run the motor in the down direction until it stops.
If the door doesn't sit in the desired position within the opening and follow the steps below.

To make the door sit higher in the guides.

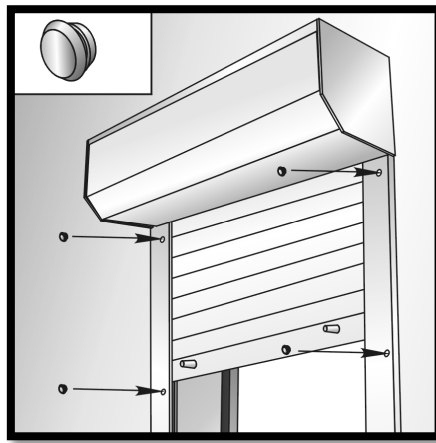
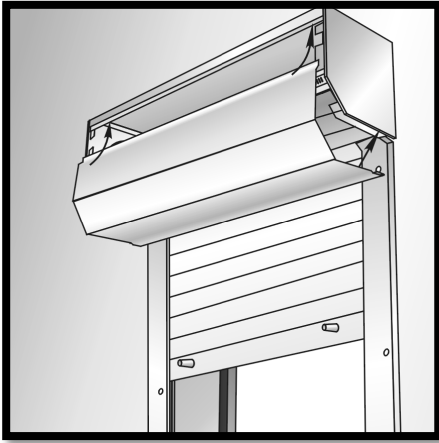
- the limit approx 5 times, then take the door down & back up again to check if it has moved, repeat until you get the curtain at the desired level.

To make the door sit lower in the guides.

+ the limit approx 5 times, then take the door down & back up again to check if it has moved, repeat until you get the curtain at the desired level.

- To Exit Hold set up mode press the PROG & DEL buttons together for 3 seconds until you hear one long beep – your limits are now set.

8. Once the steps are completed, the installation of the front cover is required to be installed to finish the installation (this is a safety requirement, to prevent accidental injury to anyone whilst the door is in motion) insert the fixing cover caps and wipe down the door.



Do not operate the door unless you are in full sight of the working door. Make sure there are no hazards within the operational area when the door is activated!

Wiring Diagrams

NRG Rocker Switch Diagram

Main power - WHITE cable.

Motor cable - BLACK cable.



The BLACK and BROWN wires coming from the motor are directional wires, so may need to be swapped over if the operational direction is incorrect. (i.e. up button taking the door down & vice versa)

Connect BLUE neutral wires together.

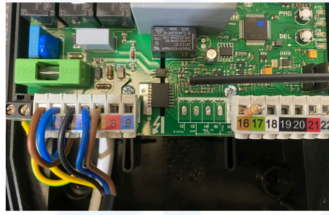
Connect YELLOW/GREEN earth wires together.

Pictures are for illustration purposes only, connector blocks are not provided and further fittings may be required.

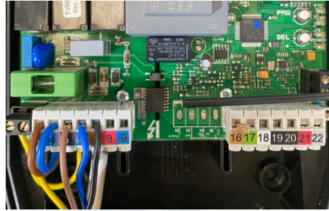
NRG Control Panel

Wiring the motor into the control panel

Left Hand motor wiring Black 5 – Blue 6 – Brown 7



Right Hand motor wiring Brown 5 – Blue 6 – Black 7



Wired Safety edge set up

Remove the resistor from terminals 16 & 17

Wire your spiral cable into the control panel Brown 16, Green 17, White 18

Your spiral cables comes pre-wired into the junction box so all you need to do is wire the opposite end into the control panel.

If correctly wired and no fault exists the green LED light will be permanently ON inside the junction box



Programming a transmitter to 1 channel - Both doors on one transmitter

Press and hold the white PROG button (circled) in the control panel – you will hear a long beep.

Keep hold of the PROG button and at the same time press the selected button on your transmitter.

The long beep will change to a rapid beep – this means the channel is now programmed.

Release both buttons and test your transmitter.

The channel chosen will operate as open/stop/close/stop.

Repeat this process for all buttons on the transmitters or if multiple doors are being installed use other button for other door.

Programming a transmitter to 2 channel – One button to Open & One button to Close

Press and hold the white PROG button (circled) in the control panel – you will hear a long beep.

Press the PROG button once and let go then Press and keep hold of the PROG button and at the same time press the selected button on your transmitter.

The long beep will change to a rapid beep – this means the channel is now programmed.

Release both buttons and test your transmitter.

The channel chosen will operate as open/stop or close/stop.

Repeat this process for all buttons on the transmitters or if multiple doors are being installed use other button for other door.



Deleting all transmitters from the control panel

Press the white DEL button (circled) in the control panel 5 times and hold on the 5th press – you will hear rapid beeps from the control panel.

Keep hold of the DEL button until you hear a long beep – this will take approx. 10 seconds.

When you hear the long beep take your finger off the button and make sure everything is deleted.

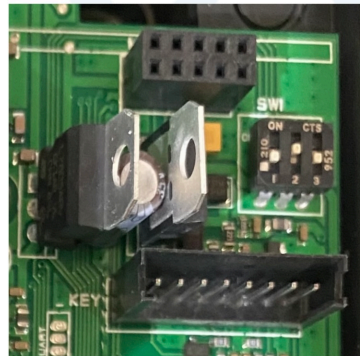


Dip switch positions

The dips switches are pre set and should not need to be touched. (as shown)

1 - OFF - 2 ON - 3 OFF

If the door beeps 5 times instead of closing, dip switch 1 may be in the wrong position.



To alter the dip switch this must be done within 30 seconds of powering on the control panel

Copyright of Rollerdoor UK

Safety Edge Exclusion in the last 5cm of travel


If the door reopens having hit the floor the safety edge exclusion should be set to 'turn off' the edge 50mm before it hits the floor.

1. Power on and within 30 seconds
2. Press PROG button ten times and keep it pressed on the 10th press for 5 seconds.

The buzzer emits 3 beeps.

3. Open the door completely by means of a memorized transmitter. The buzzer emits a long beep when the upper limit switch is reached.
4. Put under the door, an object not more than 5cm high. A small piece of wood should be sufficient.
5. Close the door (in hold-to-run mode) keeping your finger pressed on the transmitter with no interruption. The door will stop at the obstacle and the control unit will make a long beep.
6. Open the door completely and remove the object.
7. Close the door to verify the correct application of the procedure.

Copyright of Rollerdoor UK

Sequence	Meaning	Solution
1 Constant beep	Faulty control unit	Replace the control unit
2 beeps	Motor problem	<ul style="list-style-type: none"> - Set the limit switches - The thermal protection could be activated. Wait for the motor to cool down. - Check the motor connections - Test the motor separately using a test lead - Deactivate motor torque
3 beeps at startup	Radio receiver is empty	Memorize at least one transmitter
4 beeps	Radio receiver is full	Max. number of transmitters exceeded
5 beeps (L2 = ON)	Safety test failure: wired safety edge	<ul style="list-style-type: none"> - Check the rubber profile general condition - Check Optical edge wiring
5 beeps (see also the  led on the front cover)	Safety test failure: wireless safety edge system	<p>Control unit checks</p> <ul style="list-style-type: none"> - The radio card must be correctly inserted in the plug - The radio card must be paired with the bottom slat transmitter <p>Bottom slat transmitter checks</p> <ul style="list-style-type: none"> - Check type, polarity and charge level of the batteries - Check functionality by pressing the button. LED should be on whilst pressed - Check the DIP1 position for wired or wireless edge - Check wiring between bottom slat transmitter and sensitive edge <p>Sensitive edge checks</p> <ul style="list-style-type: none"> - Check the rubber profile general condition - Check the functionality by means of the testing procedure with DIP2
5 quick beeps every 5 seconds	Low batteries in the bottom slat transmitter	Replace the batteries as soon as possible. Pay attention to the polarity Use only EMBB Batteries
6 beeps (L3 = ON)	Safety test failure: emergency STOP (TB)	Check the safety device connected and the connections
8 beeps	Limit switch error: the manoeuvre exceeded the working time.	Check the limit switches and, in case, set them again
9/10 beeps	One of the relays is defective	Replace the control unit